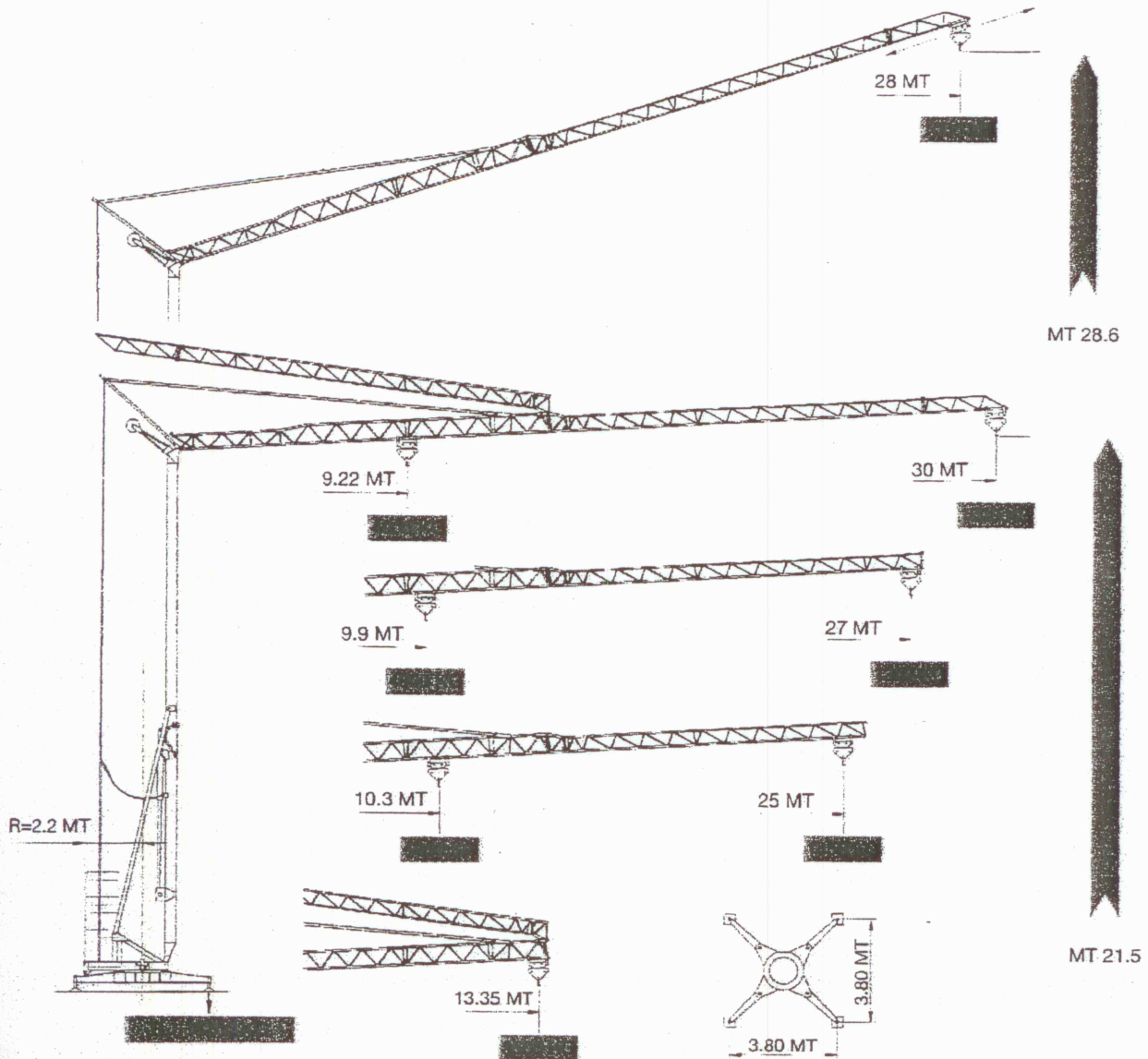


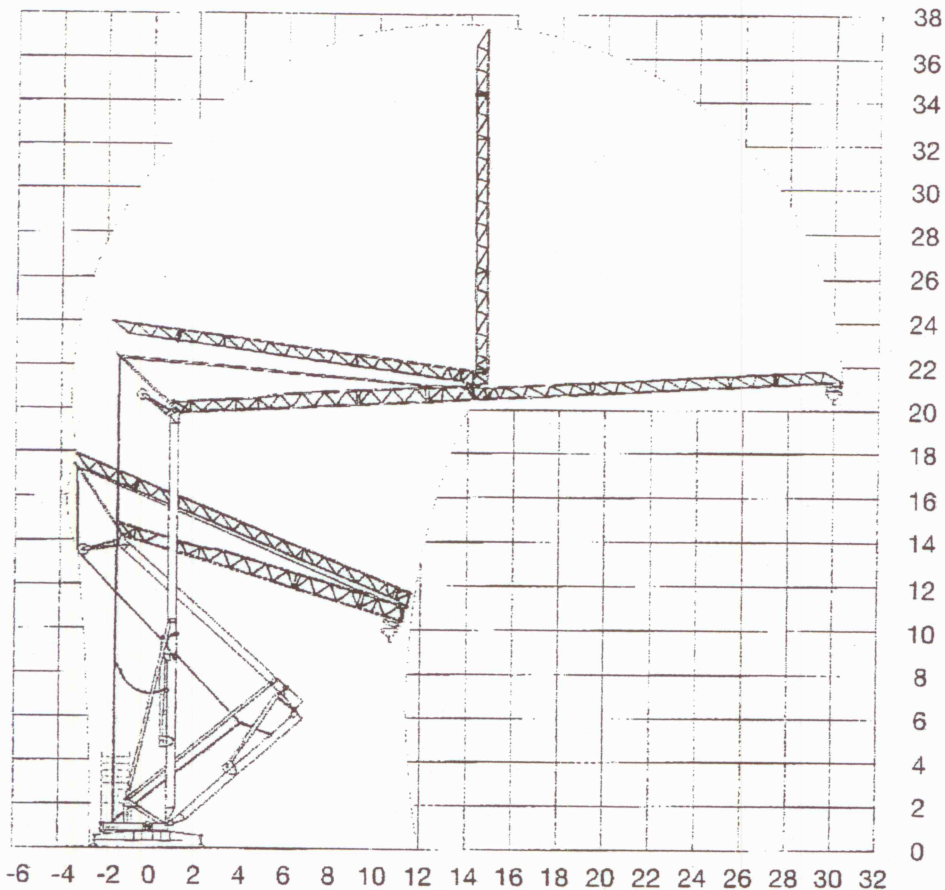
30.10/40



LOAD CURVES • LASTKURVEN • COURBES DE CHARGES • CURVE DI CARICO • CURVAS DE CARGA

	MT	9.22	12	16	20	24	28	30
	KG	4000	2909	2000	1622	1307	1087	1000
	MT	9.9	12	16	20	24	27	
	KG	4000	3182	2259	1779	1436	1250	
	MT	10.3	12	16	20	24	25	
	KG	4000	3359	2388	1881	1521	1450	
	MT	12	13.35	Luffing jib • Ausleger in Steilstellung Flèche relevée • Braccio impennato Brazo empinado				
	KG	4000	3500					

30.10/40



Space requirement • Abmessigen • Encombrement au montage
 Ingombro in montaggio • Espacio máximo de montaje

		5	1.8	2.5	2000	V	220	380
		20	6.7	9	2000	HZ	50	50
		40	8.2	11	1000	KW	13	13
		2.5	1.8	2.5	4000			
		10	6.7	9	4000			
		20	8.2	11	2000			
	18/36	1.5/2.2	2/3					
	t/min	0-1 progressif	2.2	3				

Poids de construction sans essieux • Konstruktionsgewicht ohne transportachse
 Dead weight without axles • Peso della gru senza assali
 Peso de la grua sin ejes

kg 10800

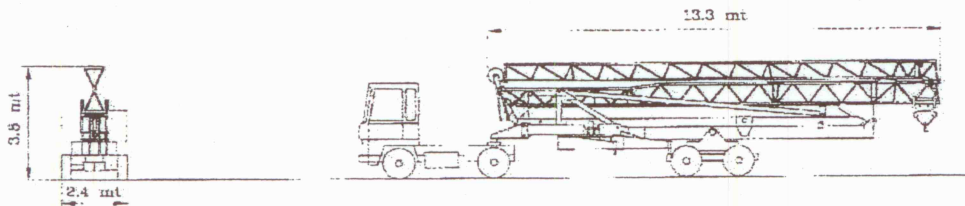
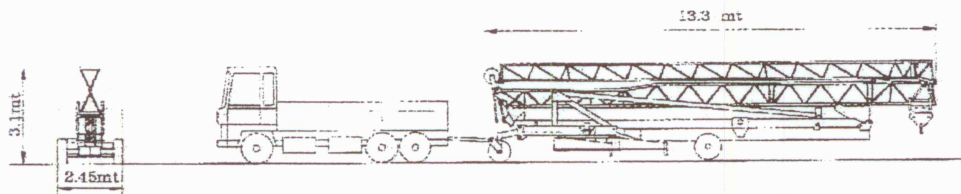
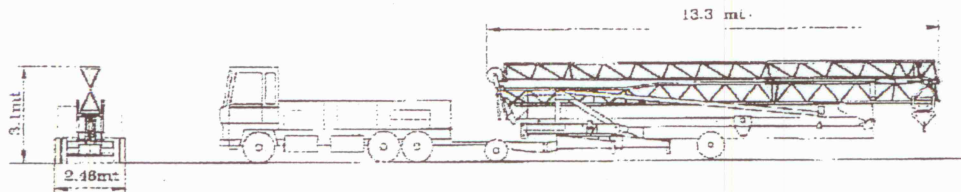
30.10/40

TRANSPORT
ROAD

TRANSPORT
STRASSE

TRANSPORT
ROUTIER

TRASPORTO
SU STRADA

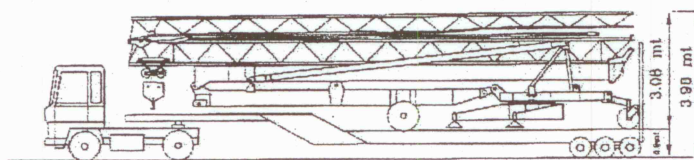


ON
LORRY

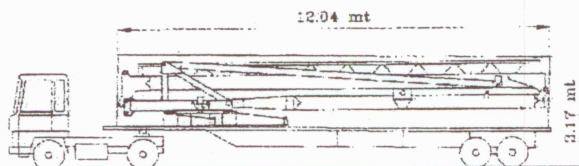
AUF
LKW

SUR
CAMION

SU
CAMION



CONTAINER OPEN TOP 40'



SUBJET TO MODIFICATION • ANDERUNGEN VORBEHALTEN • MODIFICATION RESERVÉES • CON RISERVA DI MODIFICA



MACCHINE ED ATTREZZATURE PER L'EDILIZIA
V.B. S.r.l. - Via Lavini, 21 - 25030 Pompiano (Bs)

