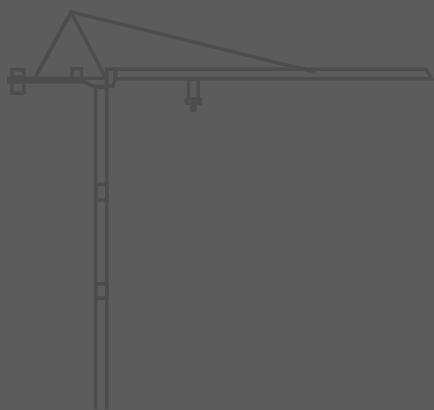


CARLO RAIMONDI



Tower Crane

City Crane MR45

Luffing Jib Crane

MR45

La gru più piccola prodotta da Raimondi: è agilissima e si monta in sole sei ore. Ideale per cantieri urbani di ristrutturazione, piccoli condomini e per complessi residenziali delle zone suburbane. Ha ingombri estremamente ridotti in fase di trasporto e si monta con autogrù oppure, per costruzioni alte, tramite montaggio idraulico.

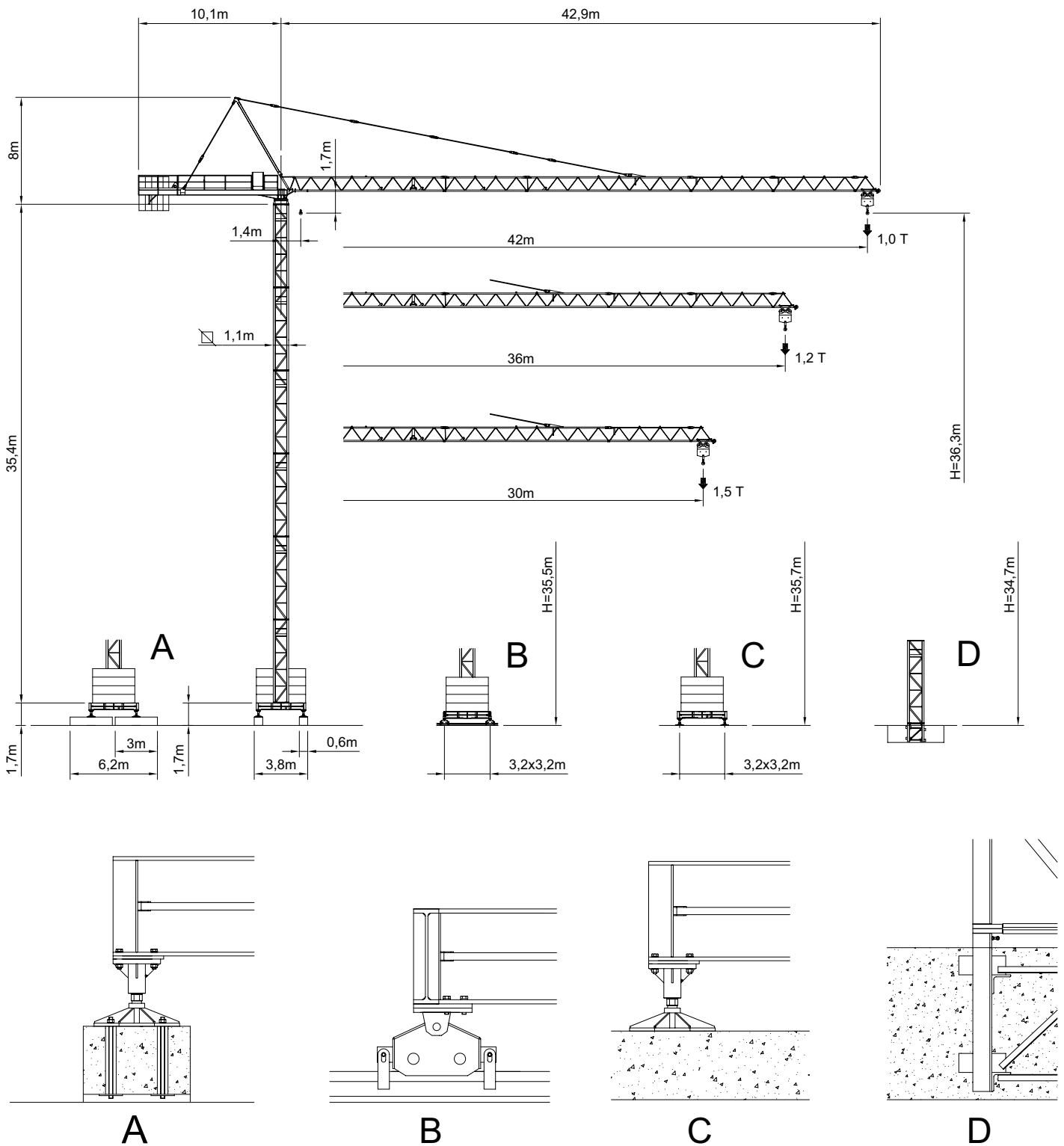
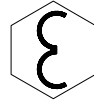
MR45

The smallest crane produced by Raimondi: it is very nimble and can be assembled in just six hours. Ideal for urban redeveloping yards, small jointly-owned blocks of flats and residential complexes in the suburbs.




This crane has very reduced dimensions during handling and can be assembled with a mobile crane or, for high buildings, with a hydraulic climbing system.

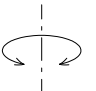
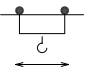
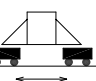
City Crane MR 45E




GRU A TORRE A MONTAGGIO RAPIDO
«CITY TOWER CRANE»



RAGGI E PORTATE
RADIUS AND S.W.L.
PORTEE ET CHARGE UTILE
AUSLADUNG UND TRAGFAHIGKEIT

Portata max / Max s.w.l. Charge maxi / Max. Tragfähigkeit		2000 kg. 			2500 kg. 			3000 kg. 		
Braccio / Jib Ausleger / Flèche	m.	30	36	42	30	36	42	30	36	42
Campo di portata max da Max s.w.l. range from Charge maxi de Max. Tragfähigkeit von	1,4 m a to à bis	23,3	23,2	23,2	19,3	19,2	19,2	17,3	17,2	17,2
Raggi (m.) Radii (m.) Portée (m.) Ausladung (m.)	12	2000	2000	2000	2500	2500	2500	3000	3000	3000
	14	2000	2000	2000	2500	2500	2500	3000	3000	3000
	16	2000	2000	2000	2500	2500	2500	3000	3000	3000
	18	2000	2000	2000	2500	2500	2500	2700	2700	2700
	20	2000	2000	2000	2400	2390	2390	2400	2390	2390
	22	2000	2000	2000	2150	2150	2150	2150	2150	2150
	24	1950	1940	1940	1950	1940	1940	1950	1940	1940
	26	1770	1770	1770	1770	1770	1770	1770	1770	1770
	28	1630	1620	1620	1630	1620	1620	1630	1620	1620
	30	1500	1490	1490	1500	1490	1490	1500	1490	1490
	32		1380	1380		1380	1380		1380	1380
	34		1290	1290		1290	1290		1290	1290
	36		1200	1200		1200	1200		1200	1200
	38			1130			1130			1130
40			1065			1060			1060	
42			1000			1000			1000	

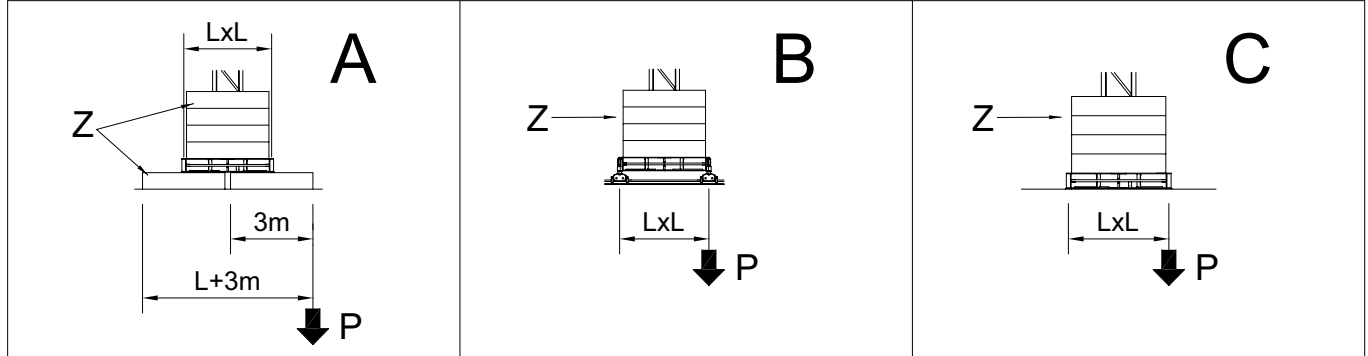
	Velocità-Speed Vitesse-Geschwindigkeit		Potenza-Power Puissance-Leistung
	0,37 0,7 1,0	giri/min r.p.m.	5,4 HP 4,0 KW
	20/41,3	m/min	1,5 HP 1,1/2,2 KW
	13	m/min	2 x 4 HP 2 x 2,9 KW

Argano - Hoisting winch - Treuil - Hubwerk			
Portata/Velocità - Load/Speed-Charge/Vitesse - Tragfähigkeit/Geschwindigkeit			
	15 HP (11 KW) 	15 HP (11 KW) 	25 HP (18,4 KW) 
1	2000 kg. / 7 m/min	2500 kg. / 5,2 m/min	3000 kg. / 7,5 m/min
2	2000 kg. / 28 m/min	2500 kg. / 21 m/min	3000 kg. / 30 m/min
3	1000 kg. / 56 m/min	1250 kg. / 42 m/min	1500 kg. / 60 m/min

Conforme alla direttiva CEE 84/534 sul livello acustico - In compliance with the EEC 84/534 instruction on noise level - Conforme à directive CEE 84/534 sur le niveau acoustique
Gemäss EWG 84/534 über Schall - Leistungspegel - Conforme con la directive CEE 84/534 sobre el nivel acustico.

A				B				C				D				
H	Z	P		H	Z	P		H	Z	P		H	P		T	
		i.s.	f.s.			i.s.	f.s.			i.s.	f.s.		i.s.	f.s.		
m.	t.	t.	t.	m.	t.	t.	t.	m.	t.	t.	t.	m.	t.	t.	t.	t.
36,3	54,4	27,3	43,3	35,5	54,4	27,5	43,2	35,7	54,4	24,5	29,3	34,7	60,6	75,0	47,7	63,4
30,4	44,5	24,6	33,2	29,6	44,5	24,7	33,1	29,8	44,5	21,3	21,7	28,8	51,2	51,9	38,9	40,9
24,5	39,6	23,0	25,7	23,7	39,6	23,1	25,7	23,9	39,6	18,5	15,6	22,9	43,0	33,9	31,4	23,5
18,6	34,6	21,4	18,8	17,8	34,6	21,6	19,1	18,0	34,6	16,0	10,1	17,0	36,2	20,7	25,1	11,9
12,7	29,7	19,6	16,9	11,9	29,7	19,8	17,2	12,1	29,7	13,7	9,5	11,1	30,5	20,1	20,6	12,5

ALTEZZA SOTTO-GANCIO, ZAVORRA DI BASE, REAZIONI
 H.U.H., MAX. BASE BALLAST AND CORNER PRESSURE
 H.S.C., LEST DE BASE MAXI ET REACTIONS
 HAKENHOHEN, MAXIMALE ZENTRALBALLASTE UND ECKKRAFT



SU BASE / ON CROSSBASE SUR CHASSIS / AUF KREUZRAHME			L = 3,8 m (□ 1,18m)					
H (m)	max. Z (t)	P (kN)	H (m)	max. Z (t)	P (kN)	H (m)	max. Z (t)	P (kN)
39,3	59,3	635	39,0	59,4	620	38,5	59,4	613
33,4	39,5	434	33,1	39,6	431	32,6	39,6	426
27,5	19,7	278	27,2	19,8	276	26,7	19,8	273
21,6	19,7	206	21,3	19,8	204	20,8	19,8	202
15,7	19,7	187	15,4	19,8	186	14,9	19,8	184

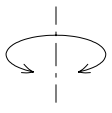
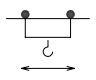
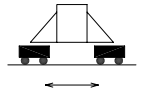
SU BASE / ON CROSSBASE SUR CHASSIS / AUF KREUZRAHME			L = 3,2 m					
H (m)	max. Z (t)	P (kN)	H (m)	max. Z (t)	P (kN)	H (m)	max. Z (t)	P (kN)
35,8	54,4	425	35,5	54,4	423	35,0	54,4	287
29,9	44,5	325	29,6	44,5	324	29,1	44,5	213
24,0	39,6	252	23,7	39,6	252	23,2	39,6	181
18,1	34,6	210	17,8	34,6	212	17,3	34,6	156
12,2	29,7	192	11,9	29,7	194	11,4	29,7	134

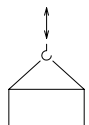

SU BASE / ON CROSSBASE SUR CHASSIS / AUF KREUZRAHME			L = 2,8 m					
H (m)	max. Z (t)	P (kN)	H (m)	max. Z (t)	P (kN)	H (m)	max. Z (t)	P (kN)
29,9	60,6	402	29,6	53,7	360	29,1	53,7	359
24,0	45,7	303	23,7	41,8	294	23,2	41,8	293
18,1	40,7	255	17,8	41,8	258	17,3	41,8	257
12,2	35,5	228	11,9	35,8	229	11,4	35,8	228

SU PLINTO / STATIONARY
 SUR PIEDS DE SCELLEMENT / STATIONAR

	H (m)	11,1	17,0	22,9	28,8	34,7
	T (kN)	299	355	421	509	735
	P (kN)	202	246	308	401	621
	q max. (Kg/cm²)	0,89	1,00	1,18	1,41	2,5

	H (m)	11,1	17,0	22,9	28,8	34,7	40,6
	T (kN)	247	304	346	581	908	1308
	P (kN)	352	402	467	697	1033	1440
	q max. (Kg/cm²)	0,54	0,57	0,64	0,84	1,16	1,8

		Velocità / Speed / Vitesse / Geschwindigkeit	Potenza / Power / Puissance / Leistung
Rotazione Slewing Orientation Schwenken		0,37 / 0,7 / 1,0 min ⁻¹	4,0 Kw
Carrello Trolley Chariot Katzfahren		20 / 41,3 m/min	1,1/2,2Kw
Traslazione Rail Translation Kranfahren		13 m/min	2 x 2,9 Kw

Argano Winch Treuril Hubwerk		Marcia Step Vitesse Gang	Carico / velocità - Load / speed Charge / vitesse - Tragfähigkeit / Geschwindigkeit
			
Tipo Type Type Typ	15 HP 11 Kw - 2	1	2000 Kg - 7 m/min
		2	2000 Kg - 28 m/min
		3	1000 Kg - 56 m/min
	15 HP 11 Kw - 2,5	1	2500 Kg - 5,2 m/min
		2	2500 Kg - 21 m/min
		3	1250 Kg - 42 m/min

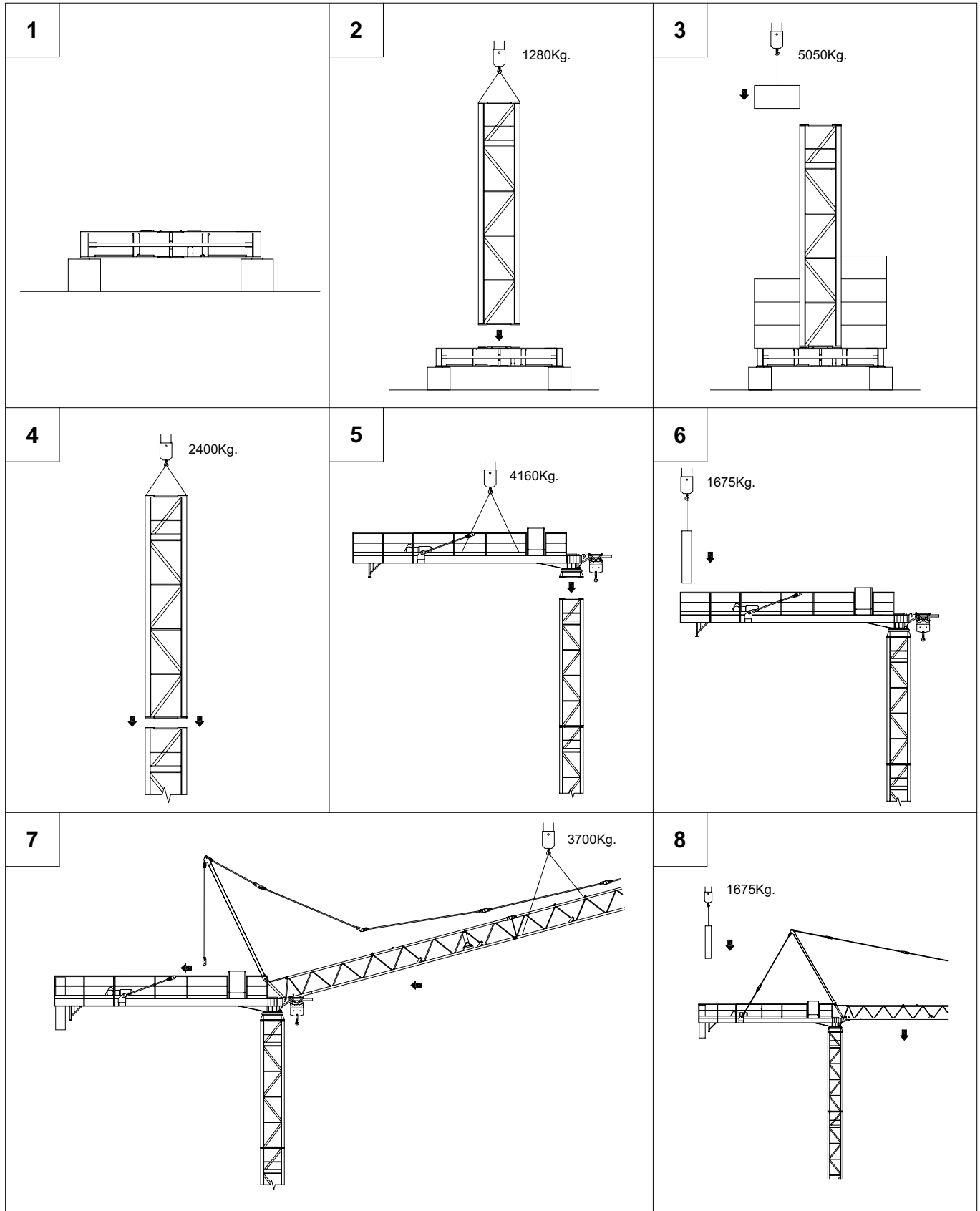
Conforme alla direttiva CEE 85/534 sul livello acustico - In compliance with the EEC 84/534 instruction on noise level - Conforme à directive CEE 84/534 sur le niveau acoustique
Gemäss EWG 84/534 über Schall - Leistungspegel - Conforme con la directive CEE 84/534 sobre el nivel acustico.

FORZA MOTRICE TOTALE TOTAL INSTALLED POWER PUISSANCE TOTALE DES MOTEURS GESAMT-MOTORENLEISTUNG	11Kw (15HP)
	23 Kw

LISTA DEI PESI / PACKING LIST
LISTE DE COLISAGE / KOLLI-LISTE

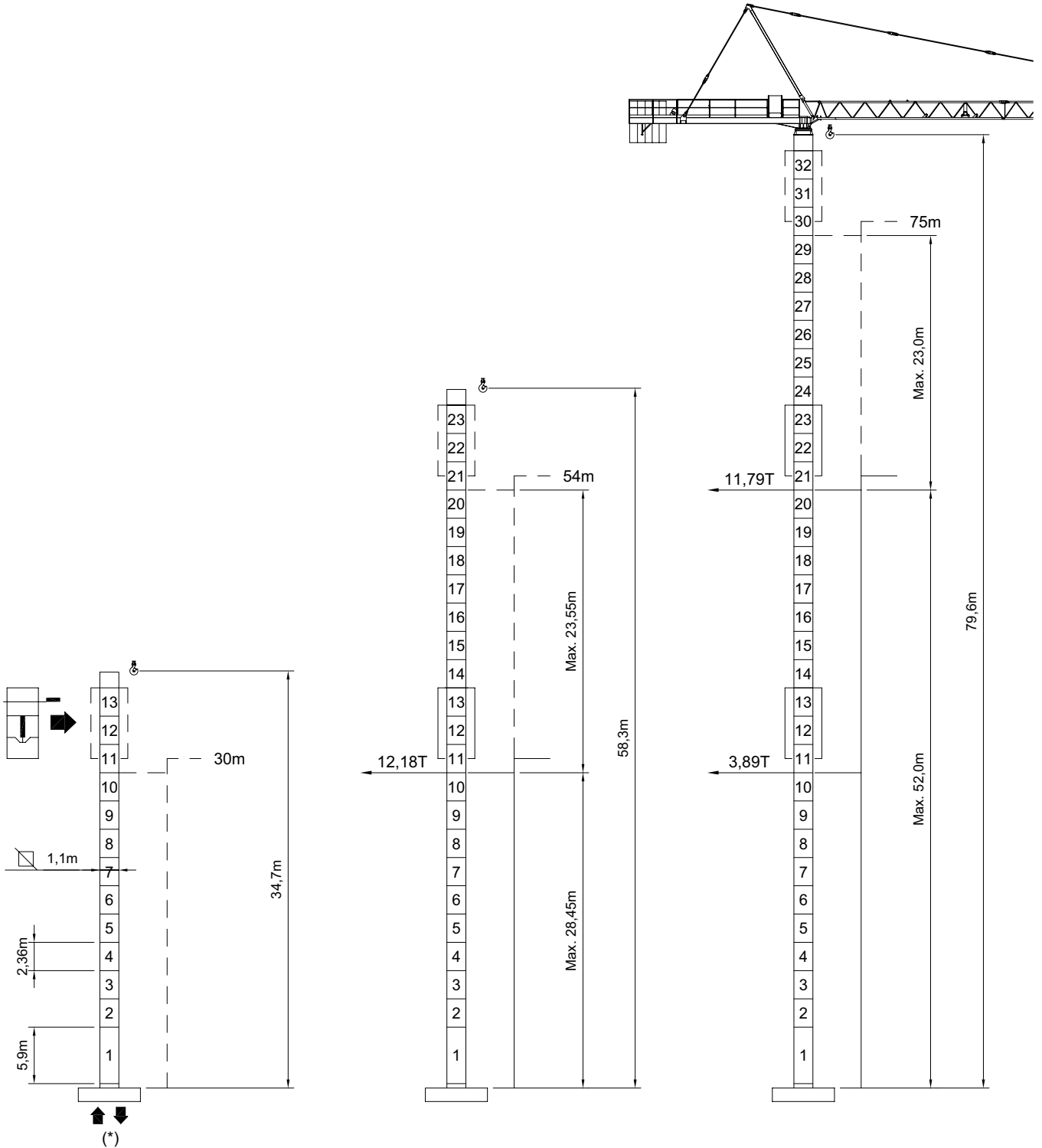
Pos. Item	Pezzi Pieces	Denominazione Description	Schizzo Sketch	Dimensioni Dimensions			Peso Weight (Kg)		
				L	W	H	Unit.	Total.	
1	1	Elemento di freccia Jib element Elément de flèche Ausleger	N°1		11,835	0,900	1,290		827
	1		N°2		6,030	0,900	1,100		380
	1		N°3		11,860	0,900	1,100		750
	2		N°4-5		6,020	0,900	1,100	360	720
	1		N°6		1,700	0,900	1,100		110
2	1	Cuspide A frame Pointe Turmspitze		6,390	0,400	0,770		250	
3	1	Controfreccia girevole, argano sollev., quadro elettrico, carrello freccia. Counterjib-turntable, hoisting winch, trolley jib, electrical box. Contreflèche tournante, treuil de levage, chariot de flèche, armoire électrique. Gegenausleger, Hubwinde, Drehwerk Laufkatze, Schaltschrank.		11,970	1,300	2,265		4160	
4	2	Blocchi di contrappeso Counterweight block Contre-poids Gegengewichtsbloecke	A45		0,870	0,450	2,400	1675	3350
	3		B45		0,870	0,405	2,400	1520	4560
5	1	Elemento di torre Tower element Elément de mature Turmstück		5,900	1,100	1,100		1280	
				11,800	1,100	1,100		2400	
6	1	Tronchetto di fondazione Expendable foundation element Elément a sceller Fundamentanker		1,290	1,320	1,320		520	
7	1	Trave principale della crociera di base Base main beam Poutre de chassis de base Hauptträger für Kreuzgelenk		4,870	0,670	0,500		1024	
8	2	Semitrave della crociera di base Half base beam Semipoutre de chassis de base Halbträger für Kreuzgelenk		2,350	0,450	0,540	450	900	
9	4	Blocco di appoggio Concrete pad Sabot en béton Betonfuss	(B1)	3,000	0,600	0,600	2465	9860	
10	2	Bilancino traslazione folle Driven bogie Boggie fou Fahrschemel ohne motorantrieb		0,800	0,195	0,385	190	380	
11	2	Bilancino traslazione motorizzato Driving bogie Boggie motorisée Fahrschemel mit motorantrieb		0,925	0,425	0,385	310	620	
12	10	Blocco di zavorra Base ballast block Lest de base Grundballastblöcken	C		3,000	1,200	0,615	5050	50500
	2		C1		3,000	1,200	0,305	2525	5050

SEQUENZA DI MONTAGGIO
ASSEMBLING SEQUENCE
SEQUENCE DE MONTAGE
AUFSTELLUNG SEQUENZ



MR 45HC

A SOPRALZO IDRAULICO
EXTERNAL CLIMBING
TELESCOPABLE
KLETTERKRANE



* Vedi tabella a pag. 4 - See table at page 4 - Voir table à la page 4 - Siehe tafel an seite 4

CARLO RAIMONDI S.p.A

Stabilimento:
Corso Garibaldi 253 - 20025 Legnano (MI) - ITALY - Fax: 0331450400 - Tel. 0331548061 - 0331545308 - www.raimondigr.it

Gru a torre per l'edilizia
Building tower cranes
Grues tour
Turmdrehkrane

